

## Lined Equal Tee



Flange Type: ANSI 150LBS

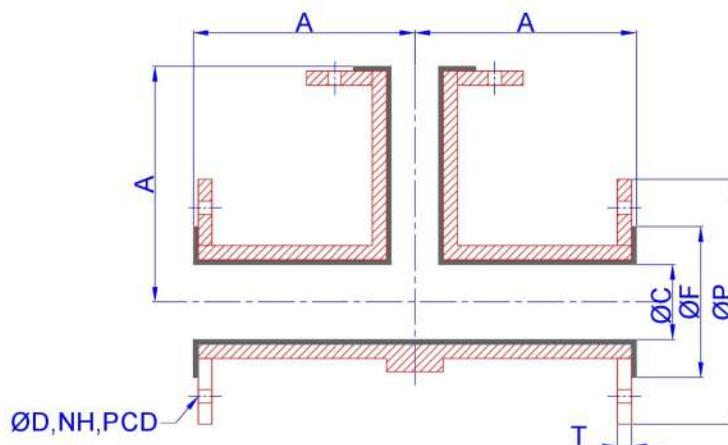
- Pipe** : ASTM A234 grade WPB, in compliance with ANSI B16.28 or SG Iron as per IS 1865-1991
- Steel Pipe** : According to SCH 40 up to 8" according to SCH20 from 10" to 12"
- Flange** : ASTM A105, in compliance with ANSI B16.5/Class 150lbs; JIS 10K or DIN is also available on request
- Standard** : Three fixed Flanges, three loose Flange and two fixed flange or two loose flanges are on request
- Lining Available** : PTFE/FEP/FEA

### Features

- High strength
- Dimensionally accurate
- Durable finish
- Sturdy structure
- With stand high pressure

### Test & Inspection Data

- Hydraulic Test : 20kg/cm After Lining
- Spark Test : 15 KV D.C After Lining



| Nominal Bore NB |     | ØP    | ØC   | A   | T    | ØF or RF | ØD   | NH   | P.C.D | L.T |
|-----------------|-----|-------|------|-----|------|----------|------|------|-------|-----|
| Inch            | MM  | MM    | MM   | MM  | MM   | MM       | MM   | Nos. | MM    | MM  |
| 1"              | 25  | 108   | 20   | 89  | 14.3 | 51       | 16   | 4    | 79.4  | 3   |
| 1.1/2"          | 40  | 127   | 34   | 102 | 17.5 | 73       | 16   | 4    | 98.4  | 3   |
| 2"              | 50  | 152.4 | 45   | 114 | 19   | 92       | 19   | 4    | 120.6 | 3.5 |
| 2.1/2"          | 65  | 177.8 | 55.5 | 127 | 22.2 | 104.8    | 19   | 4    | 139.7 | 3.5 |
| 3"              | 80  | 190.5 | 70   | 140 | 23.8 | 127      | 19   | 4    | 152.4 | 4   |
| 4"              | 100 | 228.6 | 93.5 | 165 | 23.8 | 157      | 19   | 8    | 190.5 | 4.5 |
| 6"              | 150 | 279.4 | 144  | 203 | 25.4 | 216      | 22.2 | 8    | 241.3 | 5.5 |
| 8"              | 200 | 342.9 | 191  | 229 | 28.6 | 270      | 22.2 | 8    | 298.4 | 5.5 |
| 10"             | 250 | 406.4 | 248  | 279 | 30.2 | 323      | 25.4 | 12   | 361.9 | 6   |
| 12"             | 300 | 482.6 | 299  | 305 | 31.7 | 381      | 25.5 | 12   | 431.8 | 6   |

### Ablaze Polymer & Lining

E - 52/7 Sardar Industrial Estate  
 Ajwa Road, Vadodara-19, Gujarat, India.  
 Contact : 91 265 2572420  
 Email : sales@ablazelining.com